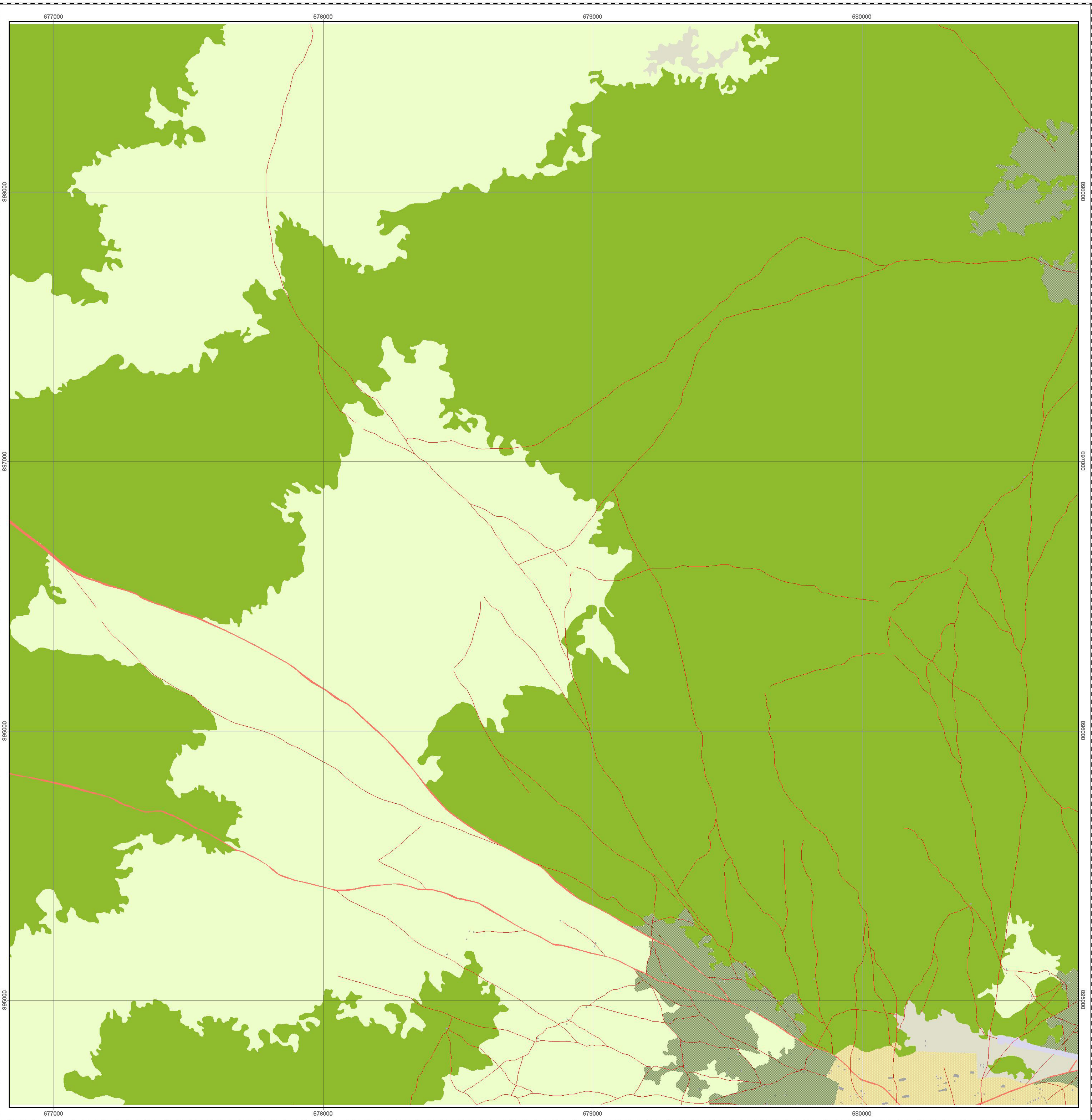


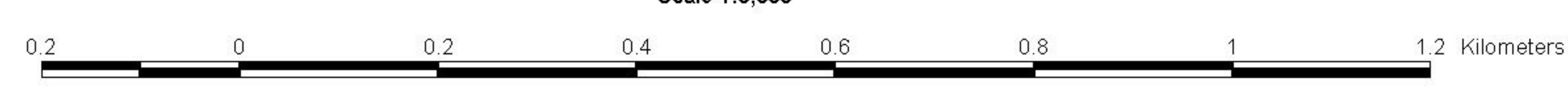
BASELINE MAPPING OF WARRAP TOWN - SOUTHERN SUDAN

SECOND DRAFT PRINTED: 19TH JAN 2006

Q1



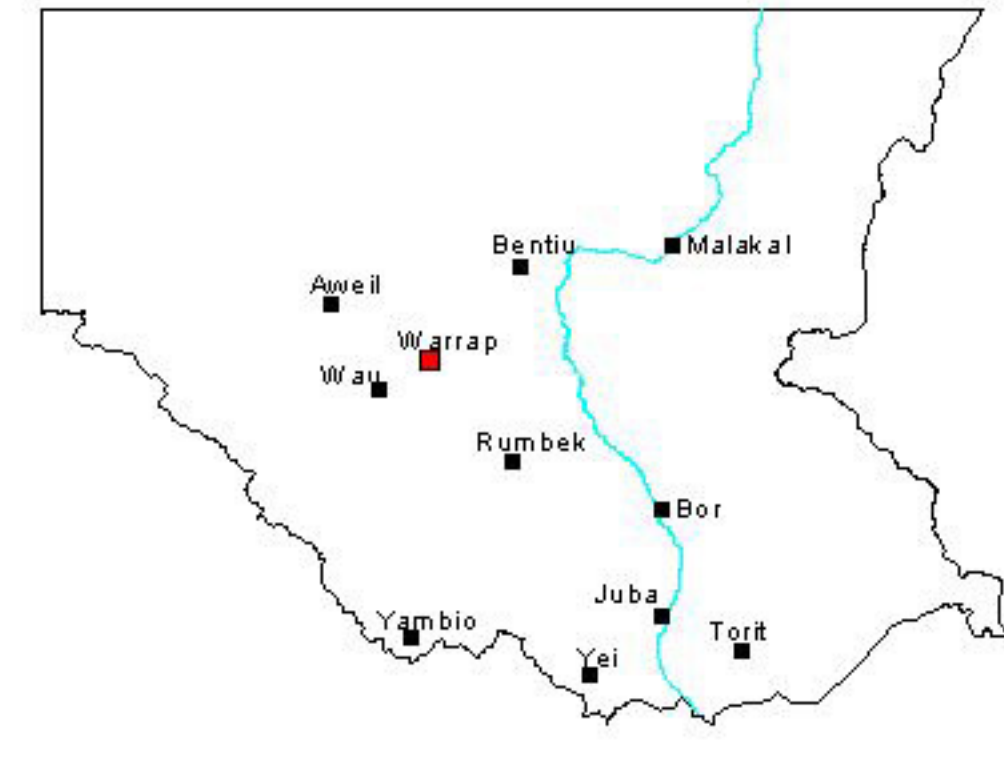
Scale 1:5,000



LEGEND

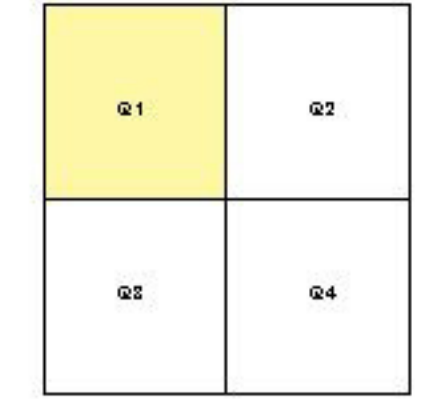
- | | | | |
|--|-------------------------|--|------------|
| | Buildings | | Path Road |
| | Built-up Area Formal | | Track Road |
| | Built-up Area Informal | | River |
| | Built-up Area Mixed | | Railway |
| | Large Scale Agriculture | | Pipeline |
| | Small Scale Agriculture | | |
| | Woodland | | |
| | Grassland | | |
| | Marshland | | |
| | Runway | | |
| | Open Ground | | |
| | Cemetery | | |
| | Road | | |
| | Permanent River | | |
| | Seasonal River | | |
| | Lake | | |
| | Swamp | | |
| | Pond | | |

LOCATIONAL MAP, SOUTHERN SUDAN



This map and baseline data were produced under the Initiative of Mapping Ten State Capitals of Southern Sudan. The project was funded by USAID and jointly implemented by Creative Associates International Inc. (CAII) and Regional Centre for Mapping of Resources for Development (RCMRD), for the Government of Southern Sudan (GOSS).

PRINT SHEET INDEX



DATA AND MAP INFORMATION SOURCES

The baseline map was derived from High Resolution QuickBird Image of 26-12-2005. The image resolutions is 0.6 metres.

MAP AND DATA SOURCE PARAMETERS

Projection: Universal Transverse Mercator (UTM)
Zone: 35N
Datum: WGS 84

MAP AND DATA OUTPUT PARAMETERS

Projection: Universal Transverse Mercator (UTM)
Zone: 35N
Datum: WGS 84



GOVERNMENT OF SOUTHERN SUDAN



CREATIVE ASSOCIATES INTERNATIONAL INC. (CAII)



RCMRD