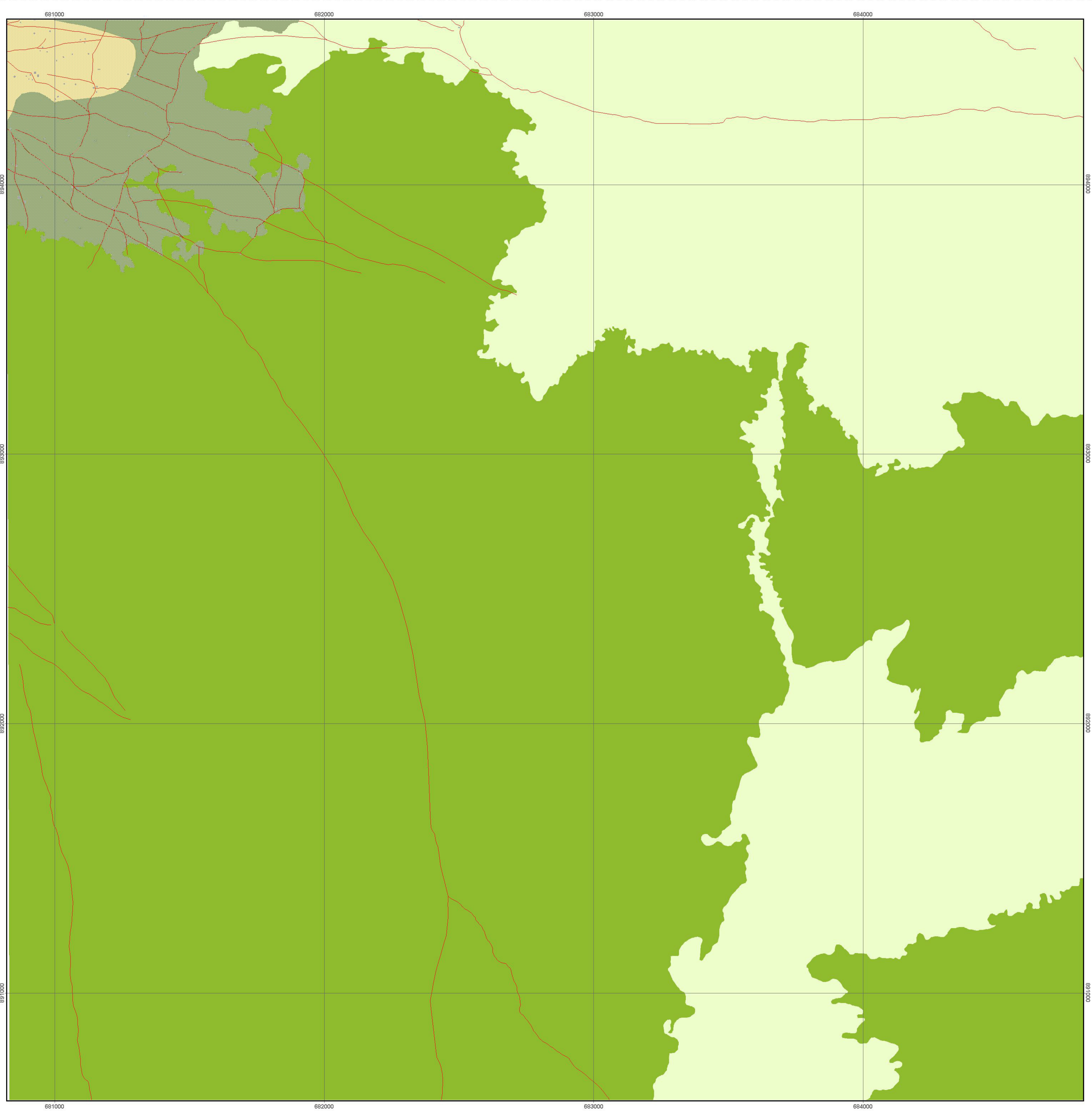
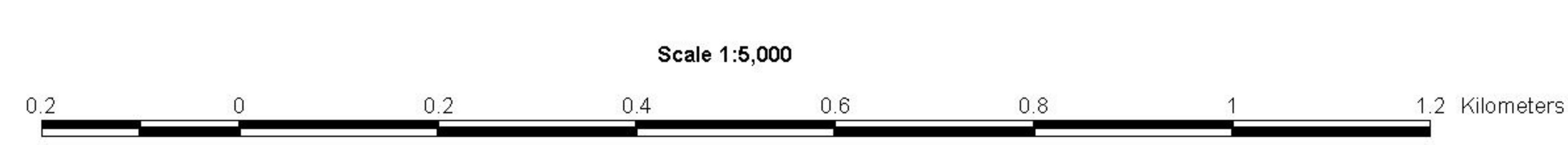


BASELINE MAPPING OF WARRAP TOWN - SOUTHERN SUDAN

Q4



Map produced and Printed by:
Regional Centre for Mapping of Resources for Development (RCMRD)



LEGEND

- | | | | |
|--|-------------------------|--|------------|
| | Buildings | | Path Road |
| | Built-up Area Formal | | Track Road |
| | Built-up Area Informal | | River |
| | Built-up Area Mixed | | Railway |
| | Large Scale Agriculture | | Pipeline |
| | Small Scale Agriculture | | |
| | Woodland | | |
| | Grassland | | |
| | Marshland | | |
| | Runway | | |
| | Open Ground | | |
| | Cemetery | | |
| | Road | | |
| | Permanent River | | |
| | Seasonal River | | |
| | Lake | | |
| | Swamp | | |
| | Pond | | |

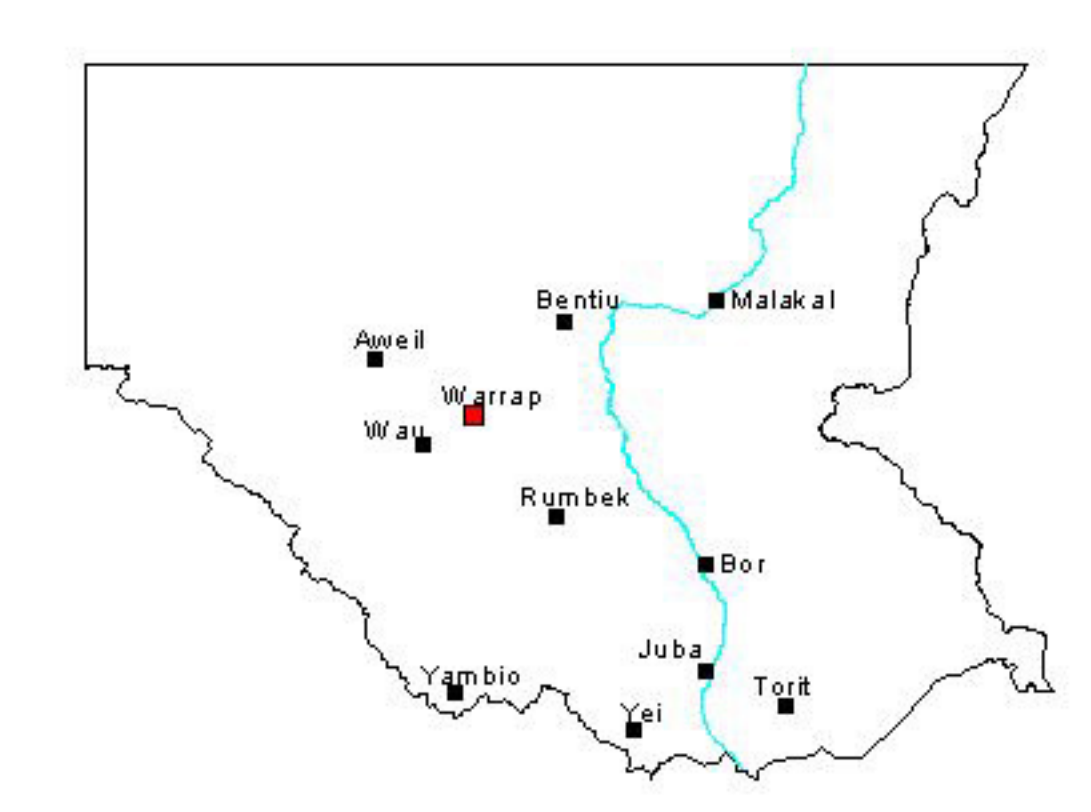
DATA AND MAP INFORMATION SOURCES
The baseline map was derived from High Resolution QuickBird Image of 26-12-2005. The image resolutions is 0.6 metres.

MAP AND DATA SOURCE PARAMETERS
Projection: Universal Transverse Mercator (UTM)
Zone: 35N
Datum: WGS 84

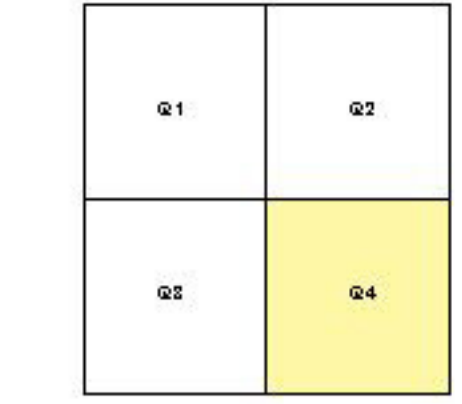
MAP AND DATA OUTPUT PARAMETERS
Projection: Universal Transverse Mercator (UTM)
Zone: 35N
Datum: WGS 84

This map and baseline data were produced under the Initiative of Mapping Ten State Capitals of Southern Sudan. The project was funded by USAID and jointly implemented by Creative Associates International Inc. (CAII) and Regional Centre for Mapping of Resources for Development (RCMRD), for the Government of Southern Sudan (GOSS).

LOCATIONAL MAP, SOUTHERN SUDAN



PRINT SHEET INDEX



GOVERNMENT OF SOUTHERN SUDAN

 USAID

 CREATIVE ASSOCIATES INTERNATIONAL INC.
 (CAII)

 RCMRD