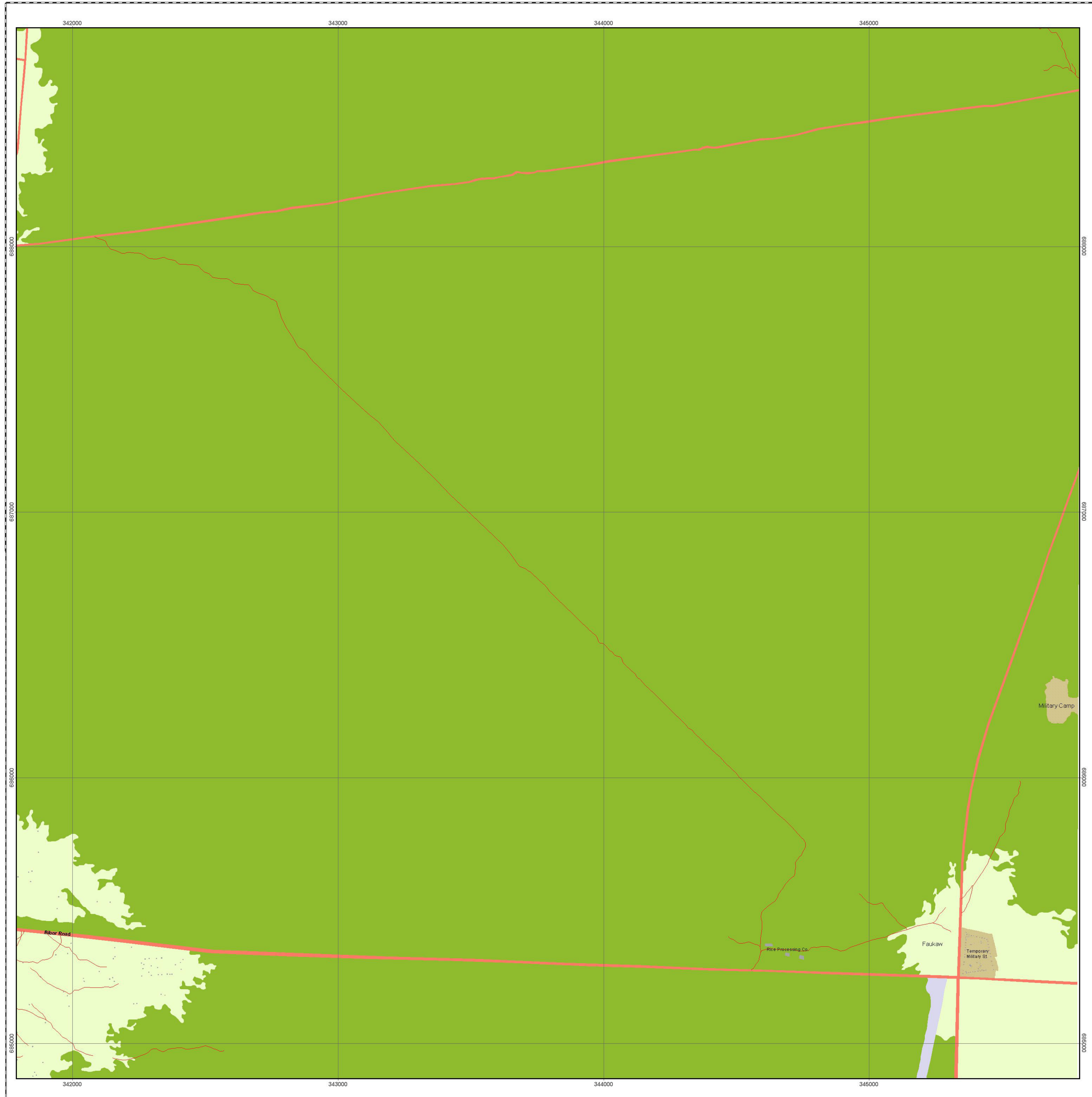


BASELINE MAPPING OF BOR TOWN - SOUTHERN SUDAN



Scale 1:5,000



LEGEND

DATA AND MAP INFORMATION SOURCES
 The baseline map was derived from High Resolution QuickBird Image of 10-10-05. The image resolutions is 0.6 metres. Auxillary data such as Area, Road and Building names were collected from field work. (December 2005)

MAP AND DATA SOURCE PARAMETERS
 Projection: Universal Transverse Mercator (UTM)
 Zone: 36N
 Datum: WGS 84

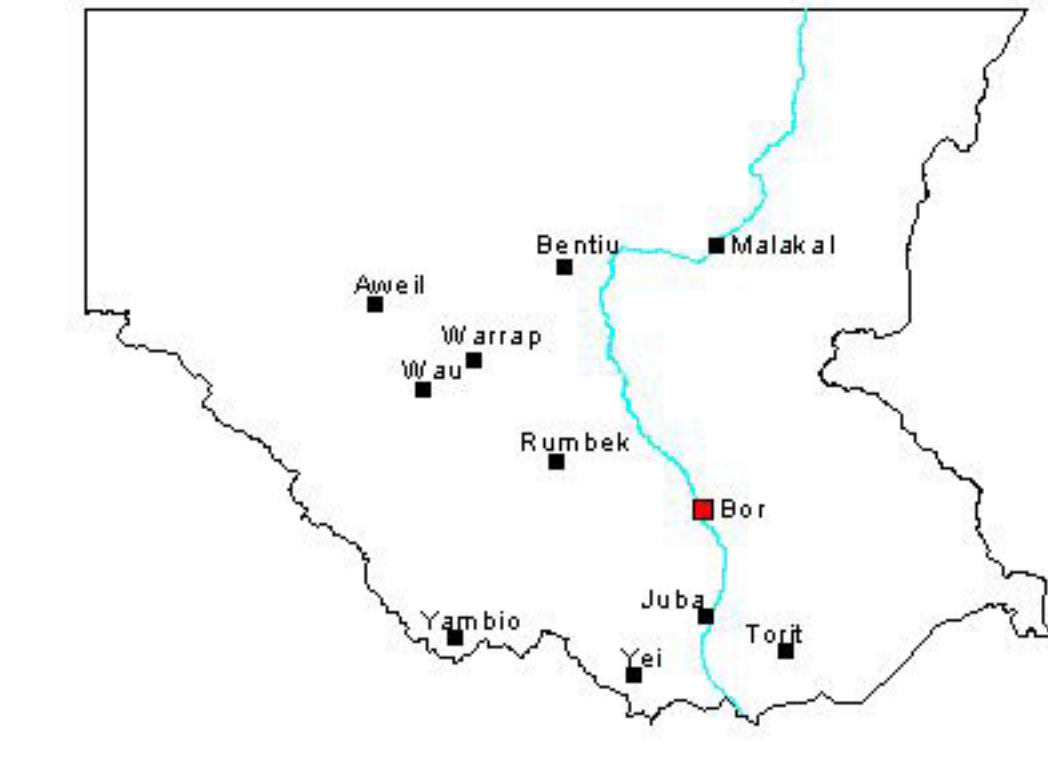
MAP AND DATA OUTPUT PARAMETERS
 Projection: Universal Transverse Mercator (UTM)
 Zone: 36N
 Datum: WGS 84

- Buildings
- Built-up Area Formal
- Built-up Area Informal
- Built-up Area Mixed
- Large Scale Agriculture
- Small Scale Agriculture
- Woodland
- Grassland
- Marshland
- Runway
- Open Ground
- Cemetry
- Road
- Permanent River
- Seasonal River
- Lake
- Swamp
- Pond

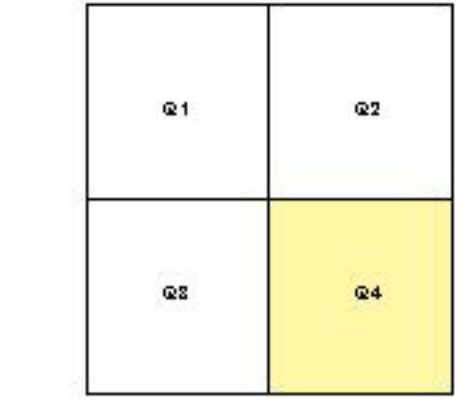
- Path Road
- Track Road
- River
- Railway
- Pipeline

This map and baseline data were produced under the Initiative of Mapping Ten State Capitals of Southern Sudan. The project was funded by USAID and jointly implemented by Creative Associates International Inc. (CAII) and Regional Centre for Mapping of Resources for Development (RCMRD), for the Government of Southern Sudan (GOSS).

LOCATIONAL MAP, SOUTHERN SUDAN



PRINT SHEET INDEX



GOVERNMENT OF SOUTHERN SUDAN

USAID

CREATIVE ASSOCIATES INTERNATIONAL INC. (CAII)

RCMRD